

# POWERFLEX®

## PART NUMBER

# PFF85-504

## DESCRIPTION

## LOWER ENGINE MOUNT INSERT

## INSTALLATION GUIDE

### Contents (parts per pack):

1 x Polyurethane Bush

1 x 38mm Diameter Washer 1 x 83mm Diameter Washer

Please read the complete fitting instructions and check package components before fitment. These fitting instructions are to be used as a guide and in conjunction with workshop manual.

It is recommended that:

- all work to be carried out by a licensed technician;
- all safety precautions adhered to;
- wheel alignment to be checked and adjusted as required after any suspension work.
- All fasteners must be tensioned to manufacturer's torque settings.



PFF85-504 fits this shape bush



### Fitting Instructions:

1. Remove the original bolt from the bush.

**Note: The OE bolt is a stretch bolt and should be renewed and replaced for re-assembly.**

2. Clear the voiding in the original rubber bush of any flashing by poking a screwdriver or rounded file up into the voiding until clear.

3. Apply some washing up liquid to the voiding and legs of the polyurethane insert to aid assembly.

4. Line up the insert with the voids in the bush and push in until the base of the insert is level with the bush.

5. Place the small spacer washer in the hole at the base of the insert, as shown in Fig. 1. This acts as a spacer to prevent the base of the insert crushing once fully assembled.

6. Place the large washer on top the small spacer washer, as shown in Fig. 2 and fit the new bolt to the bush.

7. Tension all hardware to the manufacturers recommended torque settings.



Figure 1

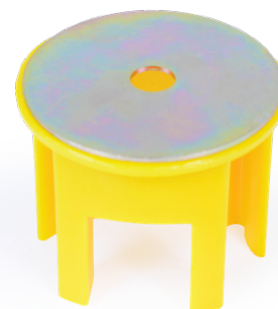


Figure 2