

POWERFLEX®

PART NUMBER

PFF5-2301

DESCRIPTION

FRONT RADIUS ARM BUSH

INSTALLATION GUIDE

Contents (parts per pack):

- | | |
|-----------------------------|------------------------------------|
| 2 x Polyurethane Bushes | 1 x PTFE/Silicone Grease |
| 2 x Stainless Steel Sleeves | 4 x Zinc Plated Mild Steel Washers |
| 4 x Outer Shells | |

Please read the complete fitting instructions and check package components before fitment. These fitting instructions are to be used as a guide and in conjunction with workshop manual.

It is recommended that:

- all work to be carried out by a licensed technician;
- all safety precautions adhered to;
- wheel alignment to be checked and adjusted as required after any suspension work.
- All fasteners must be tensioned to manufacturer's torque settings.

Fitting Instructions:

1. Remove the original rubber bush, including its outer shell from the arm.
2. Clean any dirt or burrs from the bore in the arm, removing any sharp edges with a rounded file.
3. Press the supplied outer shells into the arm from either side.
4. Apply some washing up liquid to the bore of the shells and press the polyurethane bush in until fully through the arm.

Tip: Try pressing the bush in at a slight angle, so that one part of the lip feeds into the shell first and when steady pressure is applied, the rest of the lip should follow.

5. Apply the supplied grease to the bore and the mounting faces of each bush.
6. Fit the stainless-steel sleeve into the bush and present the washers before refitting the arm to the car.
7. Tension all hardware to the manufacturer's recommended torque settings.

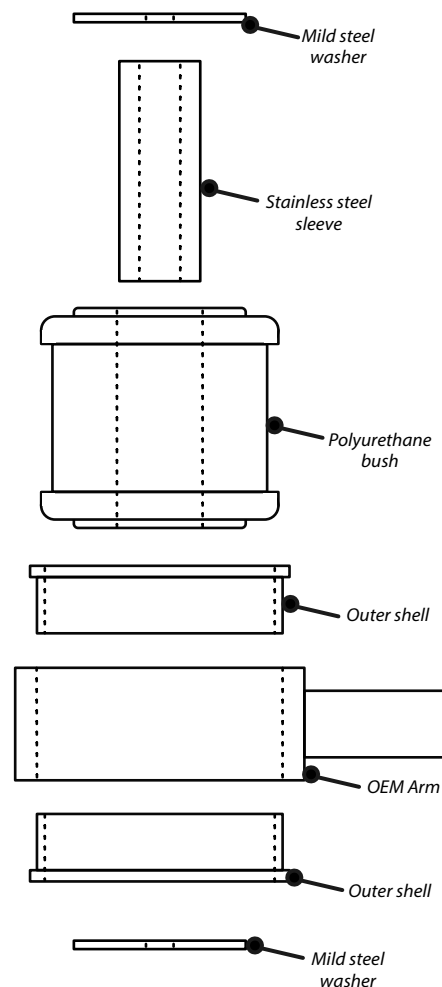


Figure 1